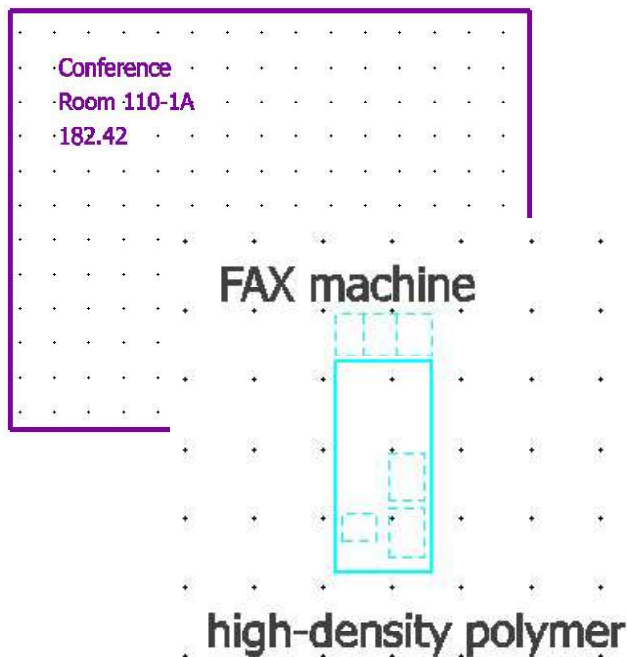


The devil is in the detail

AssetPlanner™ for MicroStation V8 2004 Edition

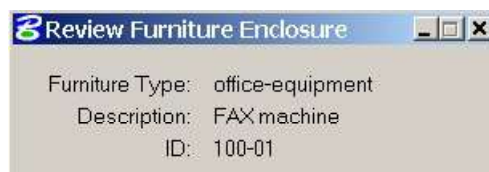
- Annotate rooms & assets
- Manage assets in a room
- View images of assets
- Create data reports in Excel, CSV, XML or HTML format
- Format reports in various ways: Intranet-ready, text, PDF
- Compatible with FlexiTable™

AssetPlanner is a plug-in application for MicroStation V8. Its purpose is to help annotate rooms and assets, such as furniture, in rooms, then produce reports that provide detailed schedules from those annotations.



AssetPlanner provides a set of tools that will be familiar to existing MicroStation users. There are additionally some specialised tools for topological operations. You can annotate rooms (*closed shapes* in MicroStation terminology) with a name and description. AssetPlanner measures a room's area automatically and adds it to the annotation. Subsequently, it tracks changes you make to the shape and updates the area annotation.

When you annotate an asset, its classification is recognised from a list of cells and asset types, to which you can add information about material, fabric, etc., and an instance name.



If you have photographs of furniture, you can optionally view an object's image using AssetPlanner's query tools.

One of AssetPlanner's strengths is reporting: it produces detailed information about rooms, furniture, or both. Its multi-level report mechanism extends to sub-reports of furniture-in-rooms, so you can obtain a schedule of rooms and the contents of each room.

AssetPlanner lets you create simple reports in formats including comma-separated-values (CSV) and extensible markup language (XML). Many office applications, such as spreadsheets and databases, can read these format directly. AssetPlanner's detail reports are produced in XML format. The reports include detailed information

## Room 100-2

Sales Area: 216 sq. m

| Category    | Description           | Material        | Fabric               |
|-------------|-----------------------|-----------------|----------------------|
| workstation | Workstation 4 persons | teak            | polished wood        |
| workstation | Workstation 4 persons | light oak       | ply                  |
| workstation | Workstation 4 persons | mahogany        | carbon-fibre inserts |
| workstation | Workstation 4 persons | tarnished beech | composite            |

Contents of Room 100-2

The devil is in the detail

## LA Solutions

| Name      | Type      | Area               |
|-----------|-----------|--------------------|
| Office    | 100...200 | 424 m <sup>2</sup> |
| Service   | 300...400 | 58 m <sup>2</sup>  |
| Net       | 100...400 | 482 m <sup>2</sup> |
| Gross     | 1000      | 697 m <sup>2</sup> |
| Net/Gross | -         | 69.2%              |

Area Analysis of 6 rooms

about each room and the furniture that it contains. Those details include the coordinates of the room's boundary, the location of each furniture cell placement, and the image associated with the furniture.

Optionally, the reports may be transformed into presentation-quality documents using HTML or other formats. Thus, a **AssetPlanner** report is immediately available for distribution to partners or contractors without further work. It is neither necessary nor required to use another office application to format the report.

Report formatting is achieved through XML technology or via FlexiTable. The detailed XML report is *transformed* using an *XSL stylesheet*. The transformation is independent of MicroStation. Your organisation's IT staff can create new stylesheets, or modify the supplied examples, to format your reports in different ways, without having to know about CAD technology.

**FlexiTable** is our versatile tool for creating schedules in MicroStation. **FlexiTable** can use data from a number of sources, including the tag data created by **AssetPlanner**, to create a formatted schedule table. Also, it can export data to other products, including Microsoft Excel™.

**FlexiTable** can watch for changes in your data and update its table automatically. If you change the area of a room, for example, **FlexiTable** notices the new area and updates the table for you.

For more information, contact your preferred supplier or LA Solutions  
**LA Solutions Ltd**  
 Chorleys Barn  
 Whitefield  
 Wiveliscombe, Somerset  
 TA4 2UW  
 tel: +44 1984 624 225  
 Visit <http://www.la-solutions.co.uk>